

Diverse insights: exploring multistakeholder engagement during Delphi panels

Marielle Brown,^a James A Doorbar,^b Debbie Nixon^c

^aCostello Medical, Boston, Massachusetts, US; ^bCostello Medical, London, UK; ^cCostello Medical, Cambridge, UK

Scan the code to access further information on the aims and stakeholder backgrounds in included Delphi panel studies

The Problem

Delphi panels provide a structured, systematic method to generate consensus and inform decision-making based on expert opinion.

However, for certain objectives and outcomes, engaging with one stakeholder group may miss important insights and impact the applicability of study outcomes.¹⁻³

This research explores how and when Delphi panels utilize multistakeholder steering committees (SCs) and voting panels.

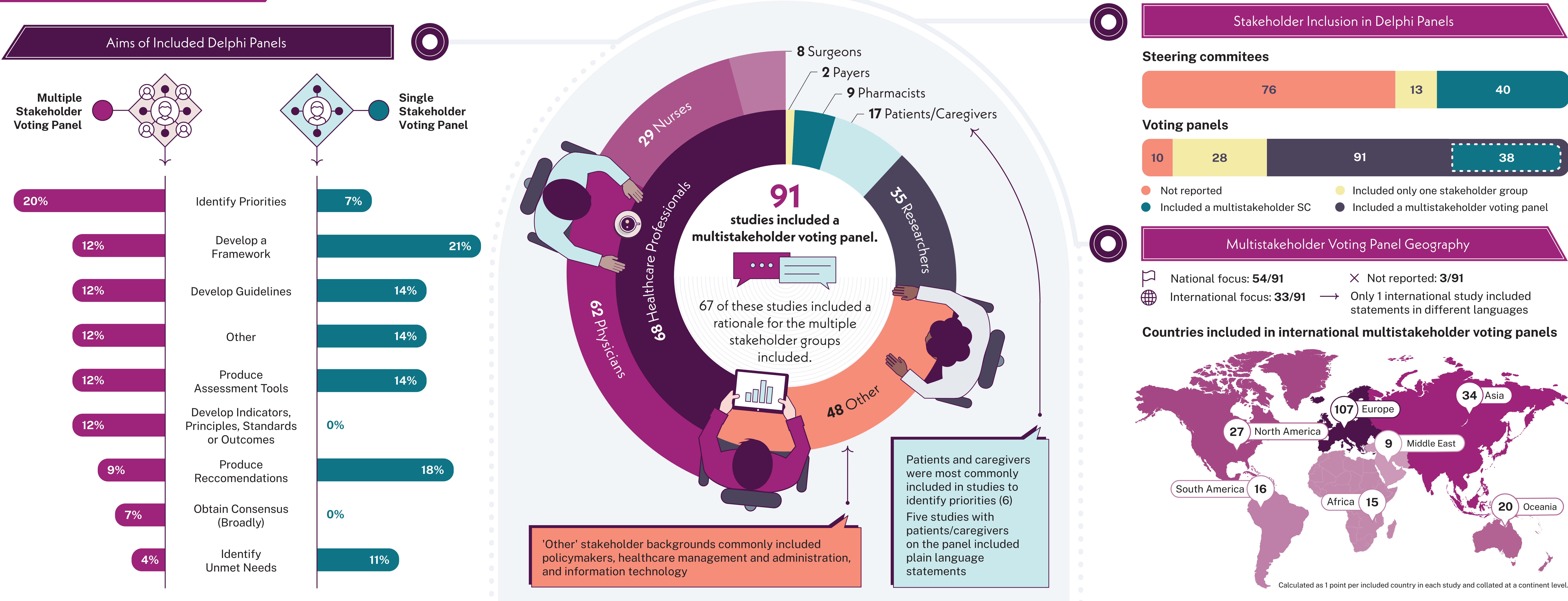


Methods

A targeted literature review was conducted using PubMed, to identify a prespecified threshold of 200 recent healthcare-related Delphi studies, sorted by date of publication. Eligibility criteria included full-text articles in English reporting original Delphi research.

Information extracted included:	
✓	Overall study objective
✓	SC/voting panel composition
✓	Panellist geography
✓	Accessibility adjustments (e.g. plain language statements, translations)

What Did We Find?



Conclusions and Unmet Needs

Conclusion

The majority of studies did not provide information on SC inclusion or composition

Unmet Needs

Increased transparency is needed on who is driving the development of statements and questions

Most voting panels were multistakeholder, demonstrating that diverse stakeholder insights are valued in consensus generating

Where appropriate, identify barriers to multistakeholder engagement and develop solutions to improve representation

Less than half of the studies that had a multistakeholder group reported use of a multistakeholder SC

Consider use of a multistakeholder SC to ensure that statements are relevant and appropriate for target audience

Very few studies reported the use of tools or approaches to improve accessibility of statements to participants

Use of plain language statements, translations and other approaches should be considered to improve accessibility to all stakeholder groups

Integrating diverse stakeholder perspectives can enhance the inclusivity, relevance and applicability of some outcomes from the consensus-building process.

Greater transparency and recruitment efforts are needed to ensure that diversity is also considered for Delphi panel SC composition, to ensure that statements are applicable to all stakeholders in the voting panel.

Abbreviations SC: Steering Committee
References ¹Gattrell WT, et al. PLoS Med. 2024;21(1); ²Khodyakov D, et al. Health Expect. 2022;25(2):732-743; ³Geist MR. Eval Program Plann. 2010;33(2):147-54.
Acknowledgements The authors thank Alice Knapton, Chloe Foulds and Louisa Burton for their contributions to data extraction. The authors also thank Ashleigh Farthing for their support with the poster layout and design.